

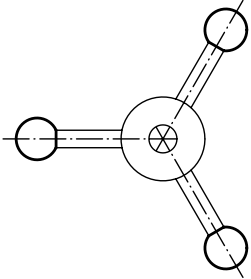


Matière:
Plastique thermodurcissable
FS 31, noir.
Insert taraudé: acier.

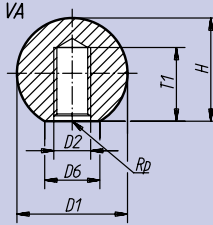
Finition:
Boule: ébarbé, brillant.

Exemple de commande:
nlm 06250-22506

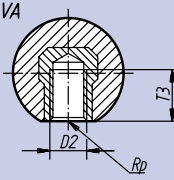
Nota:
Les boules de forme M et L
sont emmanchées sur des tiges
tolérance h9 à l'aide de légers
coups de marteau jusqu'à
obtenir un assemblage solidaire.



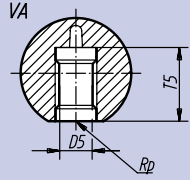
Forme C avec taraudage injecté haute pression



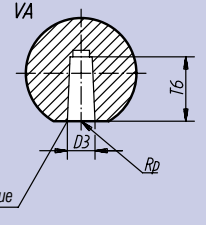
Forme E avec insert taraudé



Forme L avec insert de serrage



Forme M avec alésage conique



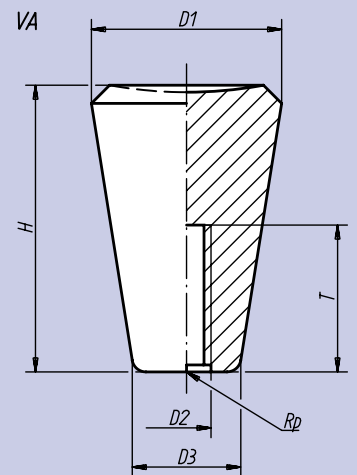
| Référence Forme C | Référence Forme E | Référence Forme M | Référence Forme M | D ₁ | D ₂ | D ₃ | D ₅ | D ₆ | H | T ₁ | T ₃ | T ₅ | T ₆ | g Forme | | |
|-------------------|-------------------|-------------------|-------------------|----------------|----------------|----------------|----------------|----------------|------|----------------|----------------|----------------|----------------|------------|---------|---|
| | | | | | | | | | | | | | | | C, L, M | E |
| 06250-11604 | 06250-21604 | 06250-41604 | 06250-31604 | 16 | M 4 | 4 | 4 | 8 | 15,0 | 7,5 | 6,0 | 11 | 9 | 2 | 4 | |
| 06250-11605 | - | - | - | 16 | M 5 | - | - | 8 | 15,0 | 7,5 | - | - | - | 3 | 3 | |
| 06250-12005 | 06250-22005 | 06250-42005 | 06250-32005 | 20 | M 5 | 5 | 5 | 12 | 18,0 | 10,5 | 7,5 | 13 | 12 | 5 | 7 | |
| 06250-12006 | 06250-22006 | - | - | 20 | M 6 | - | - | 12 | 18,0 | 10,5 | 8,0 | - | - | 5 | 6 | |
| 06250-12506 | 06250-22506 | 06250-42506 | 06250-32506 | 25 | M 6 | 6 | 6 | 15 | 23,0 | 13,5 | 12,5 | 16 | 15 | 9 | 13 | |
| 06250-12508 | 06250-22508 | 06250-42508 | 06250-32508 | 25 | M 8 | 8 | 8 | 15 | 23,0 | 13,5 | 13,5 | 15 | 15 | 10 | 15 | |
| 06250-13208 | 06250-23208 | 06250-43208 | 06250-33208 | 32 | M 8 | 8 | 8 | 18 | 29,0 | 16,0 | 16,0 | 15 | 15 | 23 | 30 | |
| 06250-13210 | 06250-23210 | 06250-43210 | 06250-33210 | 32 | M10 | 10 | 10 | 18 | 29,0 | 16,0 | 16,0 | 20 | 15 | 22 | 30 | |
| 06250-14008 | 06250-24008 | - | - | 40 | M 8 | - | - | 20 | 37,5 | 22,0 | 14,0 | - | - | 42 | 55 | |
| 06250-14010 | 06250-24010 | 06250-44010 | 06250-34010 | 40 | M10 | 10 | 10 | 20 | 37,5 | 23,0 | 22,0 | 20 | 20 | 41 | 55 | |
| 06250-14012 | 06250-24012 | 06250-44012 | 06250-34012 | 40 | M12 | 12 | 12 | 20 | 37,5 | 23,0 | 21,0 | 23 | 20 | 40 | 70 | |
| 06250-15010 | 06250-25010 | - | - | 50 | M10 | - | - | 22 | 48,0 | 30,0 | 22,0 | - | - | 69 | 84 | |
| 06250-15012 | 06250-25012 | 06250-45012 | 06250-35012 | 50 | M12 | 12 | 12 | 22 | 48,0 | 31,0 | 21,0 | 20 | 22 | 67 | 95 | |



Matière:
Plastique thermodurcissable
FS 31 noir.

Finition:
Taraudage injecté haute
pression.

Exemple de commande:
nlm 06251-06



| Référence | D ₁ | D ₂ | D ₃ | H | T | g |
|-----------|----------------|----------------|----------------|----|----|----|
| 06251-05 | 20 | M 5 | 12 | 31 | 15 | 8 |
| 06251-06 | 25 | M 6 | 15 | 38 | 19 | 16 |
| 06251-08 | 30 | M 8 | 18 | 46 | 19 | 28 |
| 06251-10 | 35 | M10 | 21 | 53 | 19 | 42 |

